



RST[®] CLASSIC
Pluggable electrical installation
with highest IP rating (IP6X)

RST20i6 and RST20i7





Also on our
You Tube channel



RST® CLASSIC

The new **RST**® 20i6 and i7 More poles for greater demands

Following the current trend, Wieland Electric continues to expand its **RST**® product range, presenting a 6- and 7-pole variant for the first time.

A total of three codings ensure both mechanical and color differentiation of the various circuits. To increase safety, a distinction is also drawn between applications with and without protective earth. The compact connectors with key data 250/400V; 600V UL/CSA, 20A, IP66/68 (3m; 2h)/69 offer high modularity and adaptability to the requirements of the application. Connectors are available in straight or angled versions, as well as for all common cable diameters. The range even includes connectors with 2 cable inputs for through-wiring. Both screw and crimp fittings are offered as the connection system.

As an interface to electrical devices, the system offers straight and angled adapters for all standard housing bores (for M16, M20, M25). All devices can therefore easily be converted to RST without changing tools.

Combination of one-phase systems (network) with signals and emergency light

Application example









General

Multi-functionality requires a higher number of poles.

The system components, rated for up to 20 A, can accommodate cables of up to a maximum 2.5 mm² and are available with screw or crimp fittings. The 6-pole variant is designed specifically for dimming emergency lights.

Different codings within the RST series allow a mechanical and visual separation from other circuits.

Coding

For daily updates visit the website at http://eshop.wieland-electric.com . Assembly instructions and other technical information can be found in the Technical Data or in eShop.					Application	250/400V
					Mechanical coding	L, N, \oplus , 1, 2, Ls 
Name	Description	Connection system	Strain-relief housing	Connection points per pole	turquoise	
Connector	1x cable guide	Screw Crimp	yes	1		
	2x cable guide	Screw Crimp fitting	yes	1		
Distributors	RST compact splitter/ multi-splitter					on request
	Individual distribution box					on request
Device connectors	Device connector M16, modular, straight			1		
	Device connector M16, modular, 7° angled			1		
	Device connector M25, standard			1		
	Device connector M25, modular, straight			1		
	Device connector M20, modular, straight			1		
	Device connector M20, modular, angled			1		
Cable assemblies	Device connector cable Male – free end	pre-assembled	pre-assembled	pre-assembled		on request
	Connection cable Female – free end	pre-assembled	pre-assembled	pre-assembled		on request
	Extension cable Male – female	pre-assembled	pre-assembled	pre-assembled		on request

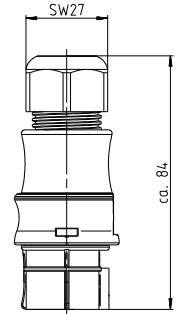
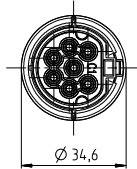
Connector, straight

For cables Ø 6 - 10 mm and 10 - 14 mm

Female connector

Unmounted with screwed cable gland.
 With or without contact seal.
 Crimp contacts separate, Accessories.

For stripping lengths, refer to Technical Specifications.



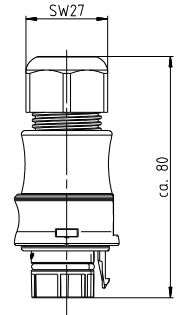
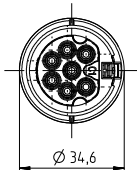
With screw connection		With crimp connection	
Cables	mm ²	Cables	mm ²
Rigid		Fine stranded	0.75-2.5
Fine stranded	0.2 - 2.5		
Stranded			
Cables with 2.5 mm ² only without ferrules			

Application	Coding	Ø cable mm	Color	Part No.	Part No.	Part No.	Part No.
				Without contact seal	With contact seal	Without contact seal	With contact seal
250/400V		6 - 10	turquoise	96.061.4053.6	9L.061.4053.6	96.161.0053.6	9L.161.0053.6
		10 - 14		96.061.4153.6	9L.061.4153.6	96.161.0153.6	9L.161.0153.6

Male connector

Unmounted with screwed cable gland and lock.
 With or without contact seal.
 Crimp contacts separate, Accessories.

For stripping lengths, refer to Technical Specifications.



With screw connection		With crimp connection	
Cables	mm ²	Cables	mm ²
Rigid		Fine stranded	0.75-2.5
Fine stranded	0.2 - 2.5		
Stranded			
Cables with 2.5 mm ² only without ferrules			

Application	Coding	Ø cable mm	Color	Part No.	Part No.	Part No.	Part No.
				Without contact seal	With contact seal	Without contact seal	With contact seal
250/400V		6 - 10	turquoise	96.062.4053.6	on request	96.162.0053.6	on request
		10 - 14		96.062.4153.6	on request	96.162.0153.6	on request

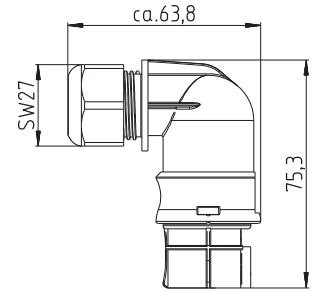
Connector, angled 90°

For cables Ø 6 - 10 mm and 10 - 14 mm

Female connector

Unmounted with screwed cable gland, 90° angle.
With or without contact seal.
Crimp contacts separate, Accessories.

For stripping lengths, refer to Technical Specifications.




With screw connection

Cables	mm ²
Rigid	
Fine stranded	0.2 - 2.5
Stranded	
Cables with 2.5 mm ² only without ferrules	

With crimp connection

Cables	mm ²
Fine stranded	0.75-2.5

Application	Coding	Ø cable mm	Color
250/400V		6 - 10	turquoise
		10 - 14	

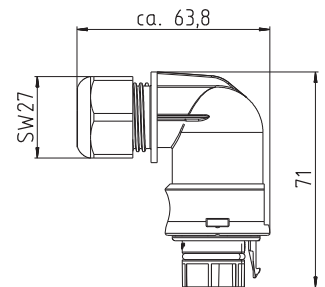
Part No.		Part No.	
Without contact seal		With contact seal	
96.063.4053.6		9L.063.4053.6	
96.063.4153.6		9L.063.4153.6	

Part No.		Part No.	
Without contact seal		With contact seal	
96.161.0053.6		9L.163.0053.6	
96.163.0153.6		9L.163.0153.6	

Male connector

Unmounted with screwed cable gland and lock.
With or without contact seal.
Crimp contacts separate, Accessories.

For stripping lengths, refer to Technical Specifications.




With screw connection

Cables	mm ²
Rigid	
Fine stranded	0.2 - 2.5
Stranded	
Cables with 2.5 mm ² only without ferrules	

With crimp connection

Cables	mm ²
Fine stranded	0.75-2.5

Application	Coding	Ø cable mm	Color
250/400V		6 - 10	turquoise
		10 - 14	

Part No.		Part No.	
Without contact seal		With contact seal	
96.064.4053.6		on request	
96.064.4153.6		on request	

Part No.		Part No.	
Without contact seal		With contact seal	
96.164.0053.6		on request	
96.164.0153.6		on request	

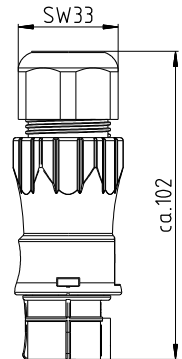
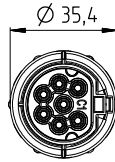
Connector, straight

For cables Ø 13 - 18 mm

Female connector

Unmounted with screwed cable gland.
With or without contact seal.
Crimp contacts separate, Accessories.

For stripping lengths, refer to Technical Specifications.



With screw connection

Cables	mm ²
Rigid	
Fine stranded	0.2 - 2.5
Stranded	
Cables with 2.5 mm ² only without ferrules	

With crimp connection

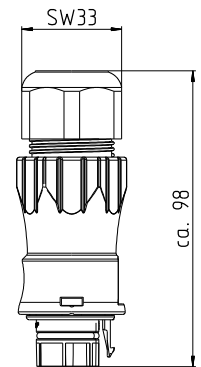
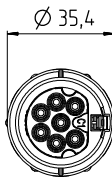
Cables	mm ²
Fine stranded	0.75-2.5

Application	Coding	Ø cable mm	Color	With screw connection		With crimp connection	
				Part No.	Part No.	Part No.	Part No.
				Without contact seal	With contact seal	Without contact seal	With contact seal
250/400V	L, N, PE, 1, 2, Ls	13 - 18	turquoise	96.061.4553.6	9L.061.4553.6	96.161.0553.6	9L.161.0553.6

Male connector

Unmounted with screwed cable gland and lock.
With or without contact seal.
Crimp contacts separate, Accessories.

For stripping lengths, refer to Technical Specifications.



With screw connection

Cables	mm ²
Rigid	
Fine stranded	0.2 - 2.5
Stranded	
Cables with 2.5 mm ² only without ferrules	

With crimp connection

Cables	mm ²
Fine stranded	0.75-2.5

Application	Coding	Ø cable mm	Color	With screw connection		With crimp connection	
				Part No.	Part No.	Part No.	Part No.
				Without contact seal	With contact seal	Without contact seal	With contact seal
250/400V	L, N, PE, 1, 2, Ls	13 - 18	turquoise	96.062.4553.6	on request	96.162.0553.6	on request

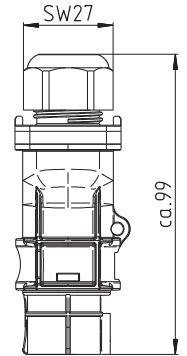
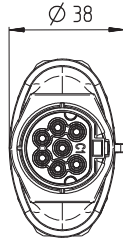
Connector with double connection, straight

For cables Ø 6 - 10 mm and 10 - 14 mm

Female connector

Unmounted with screwed cable gland.
With or without contact seal.

For stripping lengths, refer to Technical Specifications.

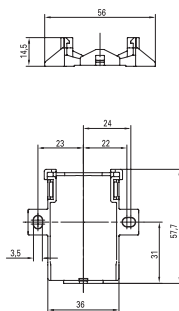
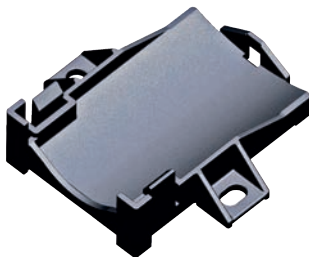


With screw connection

Cables	mm ²
Rigid	
Fine stranded	0.2 - 1.5 (without ferrules)
Stranded	

Application	Coding	Ø cable mm	Color	Part No.	
				Without contact seal	With contact seal
250/400V		6 - 10	turquoise	96.061.4253.6	on request
		10 - 14		96.061.4353.6	on request

Mounting plate for splitter connectors



Color	Part No.
■ light gray	01.006.1553.0
■ black	01.006.1553.1

Device connector M25 straight, modular

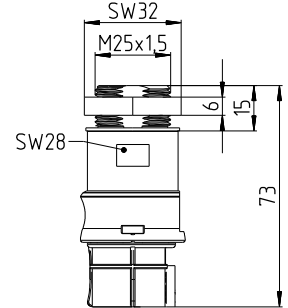
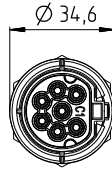
Female connector

Position fixing guaranteed by flattening the thread. Screwed from inside.

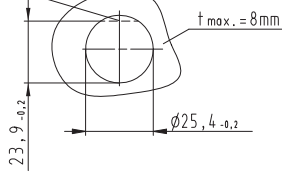
With or without contact seal.

Crimp contacts separate, Accessories.

For stripping lengths, refer to Technical Specifications.



wahlweise Verdrehsicherung
optional protection against twisting



With screw connection

Cables	mm ²
Rigid	
Fine stranded	0.2 - 2.5
Stranded	
Cables with 2.5 mm ² only without ferrules	

With crimp connection

Cables	mm ²
Fine stranded	0.75-2.5

Application	Coding	Color
250/400V	L, N, ⊕ 1, 2, Ls	turquoise

Part No.	Part No.
Without contact seal	With contact seal
96.061.6253.6	9L.061.6253.6

Part No.	Part No.
Without contact seal	With contact seal
96.161.2253.6	9L.161.2253.6

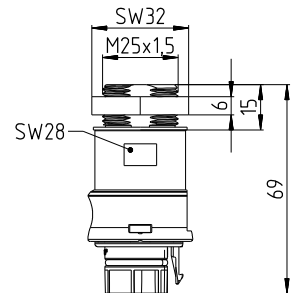
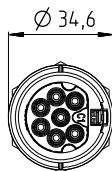
Male connector

Position fixing guaranteed by flattening the thread. Screwed from inside.

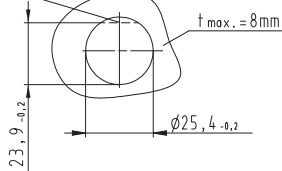
With or without contact seal.

Crimp contacts separate, Accessories.

For stripping lengths, refer to Technical Specifications.



wahlweise Verdrehsicherung
optional protection against twisting



With screw connection

Cables	mm ²
Rigid	
Fine stranded	0.2 - 2.5
Stranded	
Cables with 2.5 mm ² only without ferrules	

With crimp connection

Cables	mm ²
Fine stranded	0.75-2.5

Application	Coding	Color
250/400V	L, N, ⊕ 1, 2, Ls	turquoise

Part No.	Part No.
Without contact seal	With contact seal
96.062.6253.6	9L.062.6253.6

Part No.	Part No.
Without contact seal	With contact seal
96.162.2253.6	9L.162.2253.6

Device connector M20 straight, modular

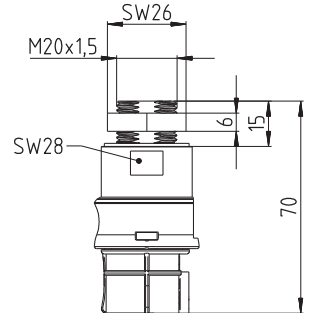
Female connector

Position fixing guaranteed by flattening the thread. Screwed from inside.

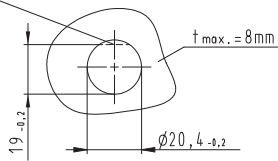
With or without contact seal.

Crimp contacts separate, Accessories.

For stripping lengths, refer to Technical Specifications.



wahlweise Verdrehsicherung
optional protection against twisting



With screw connection

Cables	mm ²
Rigid	
Fine stranded	0.2 - 2.5
Sstranded	
Cables with 2.5 mm ² only without ferrules	

With crimp connection

Cables	mm ²
Fine stranded	0.75-2.5

Application	Coding	Color
250/400V	L, N, ⊕ 1, 2, Ls	turquoise

Part No.	Part No.
Without contact seal	With contact seal
96.061.6053.6	9L.061.6053.6

Part No.	Part No.
Without contact seal	With contact seal
96.161.2053.6	9L.161.2053.6

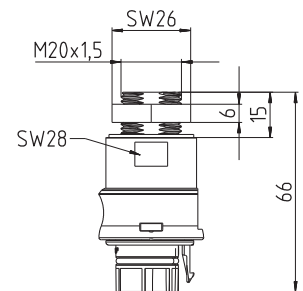
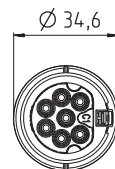
Male connector

Position fixing guaranteed by flattening the thread. Screwed from inside.

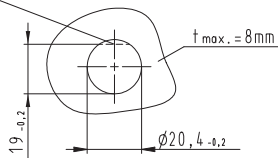
With or without contact seal.

Crimp contacts separate, Accessories.

For stripping lengths, refer to Technical Specifications.



wahlweise Verdrehsicherung
optional protection against twisting



With screw connection

Cables	mm ²
Rigid	
Fine stranded	0.2 - 2.5
Stranded	
Cables with 2.5 mm ² only without ferrules	

With crimp connection

Cables	mm ²
Fine stranded	0.75-2.5

Application	Coding	Color
250/400V	L, N, ⊕ 1, 2, Ls	turquoise

Part No.	Part No.
Without contact seal	With contact seal
96.062.6053.6	9L.062.6053.6

Part No.	Part No.
Without contact seal	With contact seal
96.162.2053.6	9L.162.2053.6

Device connector M16 straight, modular

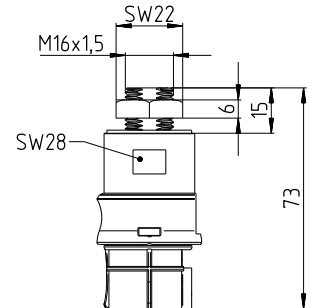
Female connector

Position fixing guaranteed by flattening the thread. Screwed from inside.

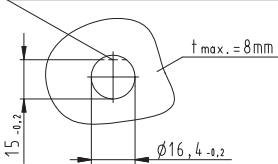
With or without contact seal.

Crimp contacts separate, Accessories.

For stripping lengths, refer to Technical Specifications.



wahlweise Verdrehsicherung
optional protection against twisting



With screw connection

Cables	mm ²
Rigid	
Fine stranded	0.2 - 2.5
Stranded	
Cables with 2.5 mm ² only without ferrules	

With crimp connection

Cables	mm ²
Fine stranded	0.75-2.5

Application	Coding	Color
250/400V	L, N, PE 1, 2, Ls	turquoise

Part No.	
Without contact seal	With contact seal
96.061.6153.6	9L.061.6153.6

Part No.	
Without contact seal	With contact seal
96.161.2153.6	9L.161.2153.6

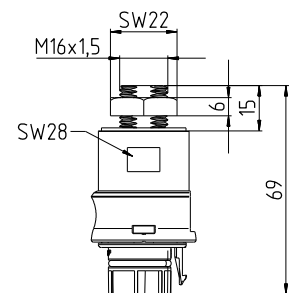
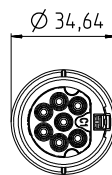
Male connector

Position fixing guaranteed by flattening the thread. Screwed from inside.

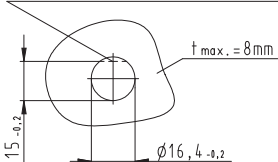
With or without contact seal.

Crimp contacts separate, Accessories.

For stripping lengths, refer to Technical Specifications.



wahlweise Verdrehsicherung
optional protection against twisting



With screw connection

Cables	mm ²
Rigid	
Fine stranded	0.2 - 2.5
Stranded	
Cables with 2.5 mm ² only without ferrules	

With crimp connection

Cables	mm ²
Fine stranded	0.75-2.5

Application	Coding	Color
250/400V	L, N, PE 1, 2, Ls	turquoise

Part No.	
Without contact seal	With contact seal
96.062.6153.6	9L.062.6153.6

Part No.	
Without contact seal	With contact seal
96.162.2153.6	9L.162.2253.6

Device connector M16 angled 7°, modular

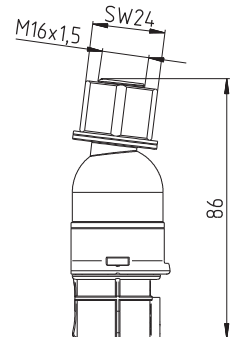
Female connector

Position fixing guaranteed by flattening the thread. Screwed from inside.

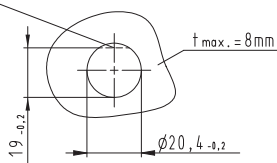
With or without contact seal.

Crimp contacts separate, Accessories.

For stripping lengths, refer to Technical Specifications.



wahlweise Verdrehsicherung
optional protection against twisting



With screw connection

Cables	mm ²
Rigid	
Fine stranded	0.2 - 2.5
Stranded	
Cables with 2.5 mm ² only without ferrules	

With crimp connection

Cables	mm ²
Fine stranded	0.75-2.5

Application	Coding	Color
250/400V	L, N, PE 1, 2, LS	turquoise

Part No.	Part No.
Without contact seal	With contact seal
96.066.6153.6	Upon request

Part No.	Part No.
Without contact seal	With contact seal
96.165.2153.6	Upon request

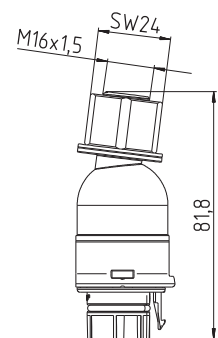
Male connector

Position fixing guaranteed by flattening the thread. Screwed from inside.

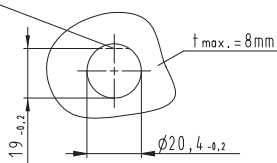
With or without contact seal.

Crimp contacts separate, Accessories.

For stripping lengths, refer to Technical Specifications.



wahlweise Verdrehsicherung
optional protection against twisting



With screw connection

Cables	mm ²
Rigid	
Fine stranded	0.2 - 2.5
Stranded	
Cables with 2.5 mm ² only without ferrules	

With crimp connection

Cables	mm ²
Fine stranded	0.75-2.5

Application	Coding	Color
250/400V	L, N, PE 1, 2, LS	turquoise

Part No.	Part No.
Without contact seal	With contact seal
96.066.6153.6	Upon request

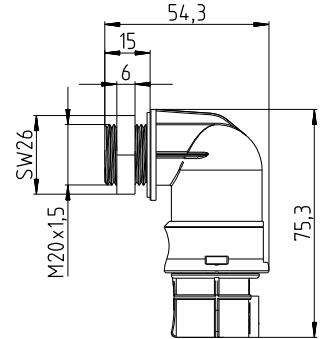
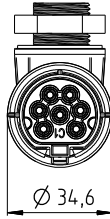
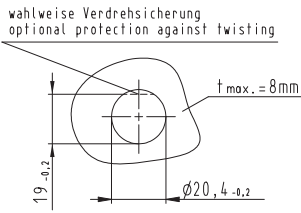
Part No.	Part No.
Without contact seal	With contact seal
96.166.2153.6	Upon request

Device connector M20 angled 90°, modular

Female connector

Position fixing guaranteed by flattening the thread. Screwed from inside.
With or without contact seal.
Crimp contacts separate, Accessories.

For stripping lengths, refer to Technical Specifications.



With screw connection

Cables	mm ²
Rigid	
Fine stranded	0.2 - 2.5
Stranded	
Cables with 2.5 mm ² only without ferrules	

With crimp connection

Cables	mm ²
Fine stranded	0.75-2.5

Application	Coding	Color
250/400V	L, N, ⊕ 1, 2, Ls	turquoise

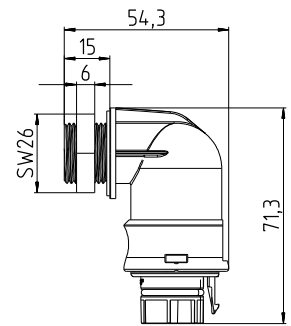
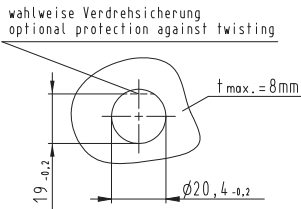
Part No.	Part No.
Without contact seal	With contact seal
96.063.6053.6	on request

Part No.	Part No.
Without contact seal	With contact seal
96.163.2053.6	on request

Male connector

Position fixing guaranteed by flattening the thread. Screwed from inside.
With or without contact seal.
Crimp contacts separate, Accessories.

For stripping lengths, refer to Technical Specifications.



With screw connection

Cables	mm ²
Rigid	
Fine stranded	0.2 - 2.5
Stranded	
Cables with 2.5 mm ² only without ferrules	

With crimp connection

Cables	mm ²
Fine stranded	0.75-2.5

Application	Coding	Color
250/400V	L, N, ⊕ 1, 2, Ls	turquoise

Part No.	Part No.
Without contact seal	With contact seal
96.064.6053.6	on request

Part No.	Part No.
Without contact seal	With contact seal
96.164.2053.6	on request

Device connector M25 angled 90°, modular

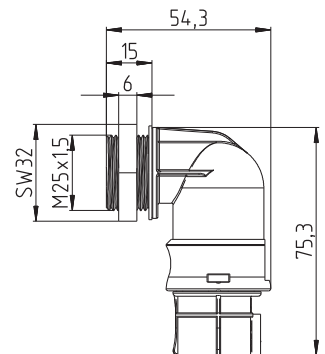
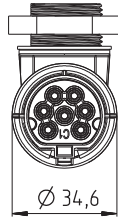
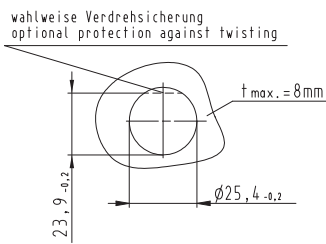
Female connector

Position fixing guaranteed by flattening the thread. Screwed from inside.

With or without contact seal.

Crimp contacts separate, Accessories.

For stripping lengths, refer to Technical Specifications.



With screw connection

Cables	mm ²
Rigid	
Fine stranded	0.2 - 2.5
Stranded	
Cables with 2.5 mm ² only without ferrules	

With crimp connection

Cables	mm ²
Fine stranded	0.75-2.5

Application	Coding	Color
250/400V	L, N, PE 1, 2, Ls	turquoise

Part No.	Part No.
Without contact seal	With contact seal
96.063.6253.6	on request

Part No.	Part No.
Without contact seal	With contact seal
96.163.2253.6	on request

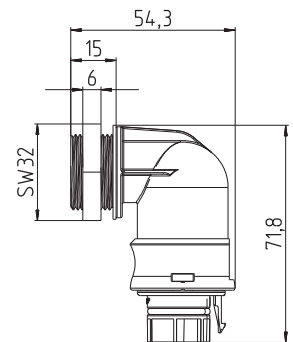
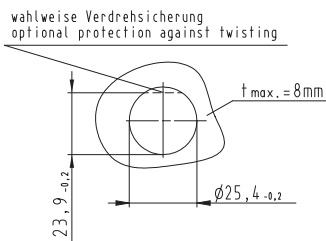
Male connector

Position fixing guaranteed by flattening the thread. Screwed from inside.

With or without contact seal.

Crimp contacts separate, Accessories.

For stripping lengths, refer to Technical Specifications.



With screw connection

Cables	mm ²
Rigid	
Fine stranded	0.2 - 2.5
Stranded	
Cables with 2.5 mm ² only without ferrules	

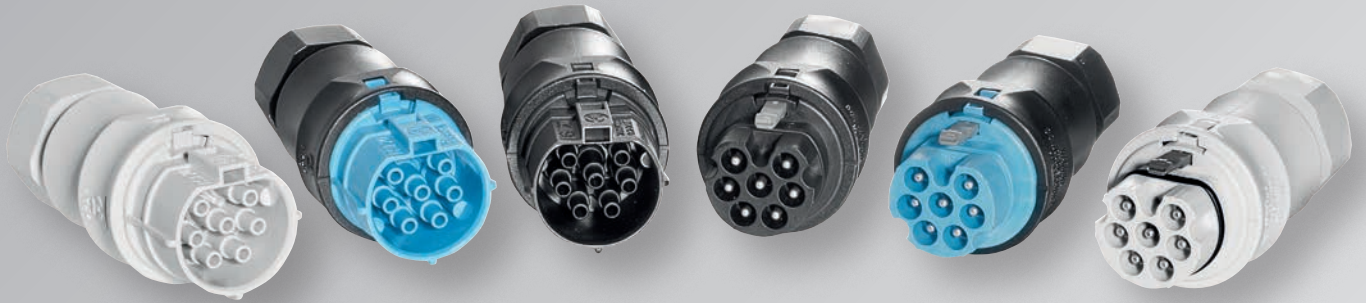
With crimp connection

Cables	mm ²
Fine stranded	0.75-2.5

Application	Coding	Color
250/400V	L, N, PE 1, 2, Ls	turquoise

Part No.	Part No.
Without contact seal	With contact seal
96.064.6253.6	on request

Part No.	Part No.
Without contact seal	With contact seal
96.164.2253.6	on request



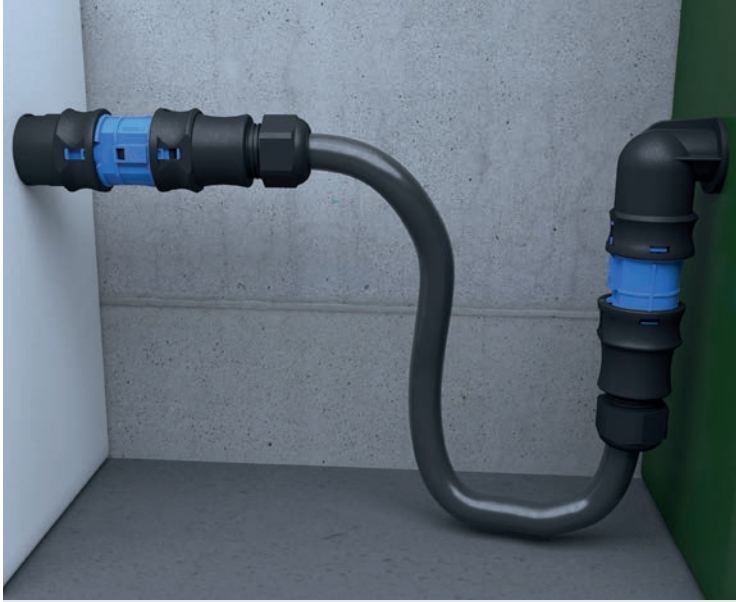
Also on our
You Tube channel



RST® CLASSIC

Combination of multi-phase systems (network) with signals, protection class II

Application example



General

Multi-functionality requires a higher number of poles.

The system components, rated for up to 20 A, can accommodate cables of up to a maximum 2.5 mm² and are available with screw or crimp fittings. The 7-pole variants are available with a total of 3 codings.

Different codings within the RST series allow a mechanical and visual separation from other circuits.

Coding

For daily updates visit the website at http://eshop.wieland-electric.com . Assembly instructions and other technical information can be found in the Technical Data or in eShop.					Application		250/400V	250/400V	250/400V
					Mechanical coding		1, 2, 3, 4/N, 5, 6, ⊕	1, 2, 3, 4/N, 5, 6, 7	L, N, ⊕, 1, 2, 3, 4
Name	Description	Connection system	Strain-relief housing	Connection points per pole	light gray	black	light blue	turquoise	
Connector	1x cable guide	Screw Crimp	yes	1	✓	✓	✓	✓	
	2x cable guide	Screw Crimp	yes	1	✓	✓	✓	✓	
Distributors	RST compact splitter/ multi-splitter								
	Individual distribution box				on request	on request	on request	on request	
Device connectors	Device connector M16, modular, straight				✓	✓	✓	✓	
	Device connector M16, modular, 7° angled				✓	✓	✓	✓	
	Device connector M25, standard								
	Device connector M25, modular, straight				✓	✓	✓	✓	
	Device connector M20, modular, straight				✓	✓	✓	✓	
	Device connector M20, modular, angled				✓	✓	✓	✓	
Cable assemblies	Device connector cable Male – free end	pre-assembled	pre-assembled	pre-assembled	on request	on request	on request	on request	
	Connection cable Female – free end	pre-assembled	pre-assembled	pre-assembled	on request	on request	on request	on request	
	Extension cable Male – female	pre-assembled	pre-assembled	pre-assembled	on request	on request	on request	on request	

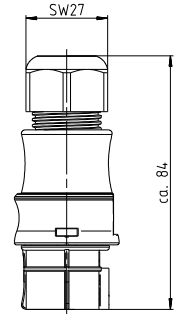
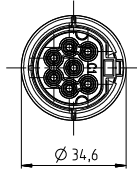
Connector, straight

For cables Ø 6 - 10 mm and 10 - 14 mm

Female connector

Unmounted with screwed cable gland.
With or without contact seal.
Crimp contacts separate, Accessories.

For stripping lengths, refer to Technical Specifications.



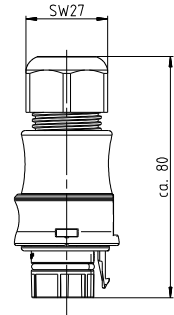
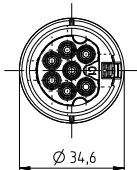
With screw connection		With crimp connection	
Cables	mm ²	Cables	mm ²
Rigid		Fine stranded	0.75-2.5
Fine stranded	0.2 - 2.5		
Stranded			
Cables with 2.5 mm ² only without ferrules			

Application	Coding	Ø cable mm	Color	Part No.	Part No.	Part No.	Part No.
				Without contact seal	With contact seal	Without contact seal	With contact seal
250/400V		6 - 10	light gray	96.071.4053.0	9L.071.4053.0	96.171.0053.0	9L.171.0053.0
			black	96.071.4053.1	9L.071.4053.1	96.171.0053.1	9L.171.0053.1
		10 - 14	light gray	96.071.4153.0	9L.071.4153.0	96.171.0153.0	9L.171.0153.0
			black	96.071.4153.1	9L.071.4153.1	96.171.0153.1	9L.171.0153.1
		6 - 10	light blue	96.071.4053.9	9L.071.4053.9	96.171.0053.9	9L.171.0053.9
			black	96.071.4153.9	9L.071.4153.9	96.171.0153.9	9L.171.0153.9
		10 - 14	light blue	96.071.4053.6	9L.071.4053.6	96.171.0053.6	9L.171.0053.6
			black	96.071.4153.6	9L.071.4153.6	96.171.0153.6	9L.171.0153.6
	6 - 10	light blue	96.071.4053.9	9L.071.4053.9	96.171.0053.9	9L.171.0053.9	
		black	96.071.4153.9	9L.071.4153.9	96.171.0153.9	9L.171.0153.9	
	10 - 14	light blue	96.071.4053.6	9L.071.4053.6	96.171.0053.6	9L.171.0053.6	
		black	96.071.4153.6	9L.071.4153.6	96.171.0153.6	9L.171.0153.6	

Male connector

Unmounted with screwed cable gland and lock.
With or without contact seal.
Crimp contacts separate, Accessories.

For stripping lengths, refer to Technical Specifications.



With screw connection		With crimp connection	
Cables	mm ²	Cables	mm ²
Rigid		Fine stranded	0.75-2.5
Fine stranded	0.2 - 2.5		
Multi-stranded			
Cables with 2.5 mm ² only without ferrules			

Application	Coding	Ø cable mm	Color	Part No.	Part No.	Part No.	Part No.
				Without contact seal	With contact seal	Without contact seal	With contact seal
250/400V		6 - 10	light gray	96.072.4053.0	on request	96.172.0053.0	on request
			black	96.072.4053.1	on request	96.172.0053.1	on request
		10 - 14	light gray	96.072.4153.0	on request	96.172.0153.0	on request
			black	96.072.4153.1	on request	96.172.0153.1	on request
		6 - 10	light blue	96.072.4053.9	on request	96.172.0053.9	on request
			black	96.072.4153.9	on request	96.172.0153.9	on request
		10 - 14	light blue	96.072.4053.6	on request	96.172.0053.6	on request
			black	96.072.4153.6	on request	96.172.0153.6	on request
	6 - 10	light blue	96.072.4053.9	on request	96.172.0053.9	on request	
		black	96.072.4153.9	on request	96.172.0153.9	on request	
	10 - 14	light blue	96.072.4053.6	on request	96.172.0053.6	on request	
		black	96.072.4153.6	on request	96.172.0153.6	on request	

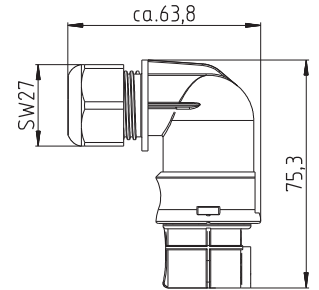
Connector, straight

For cables Ø 6 - 10 mm and 10 - 14 mm

Female connector

Unmounted with screwed cable gland. 90° angle
 With or without contact seal.
 Crimp contacts separate, Accessories.

For stripping lengths, refer to Technical Specifications.



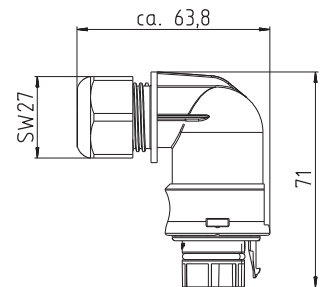
With screw connection		With crimp connection	
Cables	mm ²	Cables	mm ²
Rigid		Fine stranded	0.75-2.5
Fine stranded	0.2 - 2.5		
Multi-stranded			
Cables with 2.5 mm ² only without ferrules			

Application	Coding	Ø cable mm	Color	Part No.		Part No.	
				Without contact seal	With contact seal	Without contact seal	With contact seal
250/400V	 1, 2, 3, 4/N, 5, 6, ⊕	6 - 10	light gray	96.073.4053.0	9L.073.4053.0	96.173.0053.0	9L.173.0053.0
			black	96.073.4053.1	9L.073.4053.1	96.173.0053.1	9L.173.0053.1
		10 - 14	light gray	96.073.4153.0	9L.073.4153.0	96.173.0153.0	9L.173.0153.0
			black	96.073.4153.1	9L.073.4153.1	96.173.0153.1	9L.173.0153.1
	 1, 2, 3, 4/N, 5, 6, 7	6 - 10	light blue	96.073.4053.9	9L.073.4053.9	96.173.0053.9	9L.173.0053.9
			black	96.073.4153.9	9L.073.4153.9	96.173.0153.9	9L.173.0153.9
		10 - 14	light blue	96.073.4053.6	9L.073.4053.6	96.173.0053.6	9L.173.0053.6
			black	96.073.4153.6	9L.073.4153.6	96.173.0153.6	9L.173.0153.6
 L, N, ⊕, 1, 2, 3, 4	6 - 10	light blue	96.073.4053.9	9L.073.4053.9	96.173.0053.9	9L.173.0053.9	
		black	96.073.4153.9	9L.073.4153.9	96.173.0153.9	9L.173.0153.9	
	10 - 14	light blue	96.073.4053.6	9L.073.4053.6	96.173.0053.6	9L.173.0053.6	
		black	96.073.4153.6	9L.073.4153.6	96.173.0153.6	9L.173.0153.6	

Male connector

Unmounted with screwed cable gland and lock.
 With or without contact seal.
 Crimp contacts separate, Accessories.

For stripping lengths, refer to Technical Specifications.



With screw connection		With crimp connection	
Cables	mm ²	Cables	mm ²
Rigid		Fine stranded	0.75-2.5
Fine stranded	0.2 - 2.5		
Multi-stranded			
Cables with 2.5 mm ² only without ferrules			

Application	Coding	Ø cable mm	Color	Part No.		Part No.	
				Without contact seal	With contact seal	Without contact seal	With contact seal
250/400V	 1, 2, 3, 4/N, 5, 6, ⊕	6 - 10	light gray	96.074.4053.0	on request	96.174.0053.0	on request
			black	96.074.4053.1	on request	96.174.0053.1	on request
		10 - 14	light gray	96.074.4153.0	on request	96.174.0153.0	on request
			black	96.074.4153.1	on request	96.174.0153.1	on request
	 1, 2, 3, 4/N, 5, 6, 7	6 - 10	light blue	96.074.4053.9	on request	96.174.0053.9	on request
			black	96.074.4153.9	on request	96.174.0153.9	on request
		10 - 14	light blue	96.074.4053.6	on request	96.174.0053.6	on request
			black	96.074.4153.6	on request	96.174.0153.6	on request
 L, N, ⊕, 1, 2, 3, 4	6 - 10	light blue	96.074.4053.9	on request	96.174.0053.9	on request	
		black	96.074.4153.9	on request	96.174.0153.9	on request	
	10 - 14	light blue	96.074.4053.6	on request	96.174.0053.6	on request	
		black	96.074.4153.6	on request	96.174.0153.6	on request	

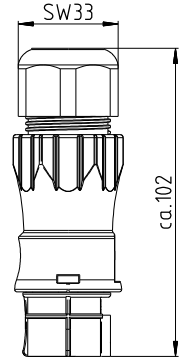
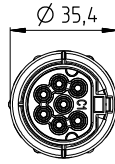
Connector, straight

For cables Ø 13 - 18 mm

Female connector

Unmounted with screwed cable gland.
With or without contact seal.
Crimp contacts separate, Accessories.

For stripping lengths, refer to Technical Specifications.



With screw connection

Cables	mm ²
Rigid	
Fine stranded	0.2 - 2.5
Stranded	
Cables with 2.5 mm ² only without ferrules	

With crimp connection

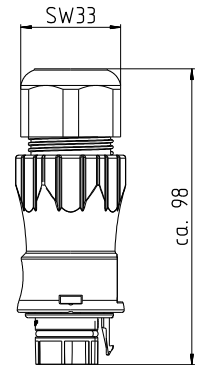
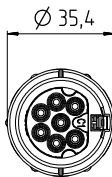
Cables	mm ²
Fine stranded	0.75-2.5

Application	Coding	Ø cable mm	Color	Part No.		Part No.	
				Without contact seal	With contact seal	Without contact seal	With contact seal
250/400V	1, 2, 3, 4/N, 5, 6, ⊕	13 - 18	light gray black	96.071.4553.0 96.071.4553.1	9L.071.4553.0 9L.071.4553.0	96.171.0553.0 96.171.0553.1	9L.171.0553.0 9L.171.0553.1
	1, 2, 3, 4/N, 5, 6, 7	13 - 18	light blue	96.071.4553.9	9L.071.4553.9	96.171.0553.9	9L.171.0553.9
	L, N, ⊕, 1, 2, 3, 4	13 - 18	turquoise	96.071.4553.6	9L.071.4553.6	96.171.0553.6	9L.171.0553.6

Male connector

Unmounted with screwed cable gland and lock.
With or without contact seal.
Crimp contacts separate, Accessories.

For stripping lengths, refer to Technical Specifications.



With screw connection

Cables	mm ²
Rigid	
Fine stranded	0.2 - 2.5
Stranded	
Cables with 2.5 mm ² only without ferrules	

With crimp connection

Cables	mm ²
Fine stranded	0.75-2.5

Application	Coding	Ø cable mm	Color	Part No.		Part No.	
				Without contact seal	With contact seal	Without contact seal	With contact seal
250/400V	1, 2, 3, 4/N, 5, 6, ⊕	13 - 18	light gray black	96.072.4553.0 96.072.4553.1	on request on request	96.172.0553.0 96.172.0553.1	on request on request
	1, 2, 3, 4/N, 5, 6, 7	13 - 18	light blue	96.072.4553.9	on request	96.172.0553.9	on request
	L, N, ⊕, 1, 2, 3, 4	13 - 18	turquoise	96.072.4553.6	on request	96.172.0553.6	on request

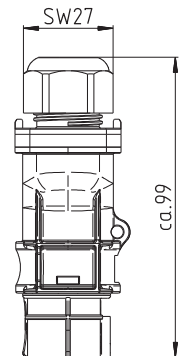
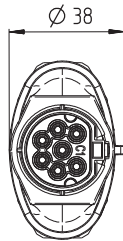
Connector with double connection, straight

For cables Ø 6 - 10 mm and 10 - 14 mm

Female connector

Unmounted with screwed cable gland.
With or without contact seal.
Crimp contacts separate, Accessories.

For stripping lengths, refer to Technical Specifications.

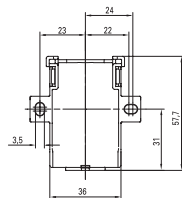
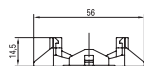
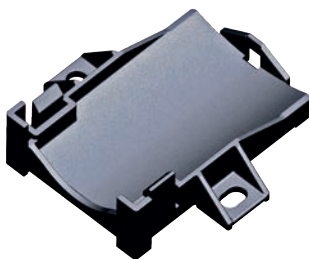


With screw connection

Cables	mm ²
Rigid	
Fine stranded	0.2-1.5 (without ferrules)
Stranded	

Application	Coding	Ø cable mm	Color	Part No.	
				Without contact seal	With contact seal
250/400V	 1, 2, 3, 4/N, 5, 6, 7	6 - 10	light gray	96.071.4253.0	on request
			black	96.071.4253.1	on request
		10 - 14	light gray	96.071.4353.0	on request
			black	96.071.4353.1	on request
	 1, 2, 3, 4/N, 5, 6, 7	6 - 10	light blue	96.071.4253.9	on request
			black	96.071.4353.9	on request
		10-14	light blue	96.071.4253.9	on request
			black	96.071.4353.9	on request
 L, N, PE, 1, 2, 3, 4	6 - 10	turquoise	96.071.4253.6	on request	
		black	96.071.4353.6	on request	
		10-14	turquoise	96.071.4253.6	on request
			black	96.071.4353.6	on request

Mounting plate for splitter connectors



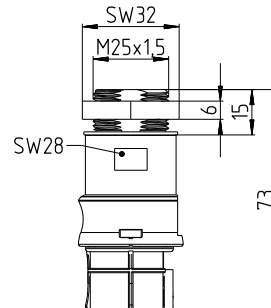
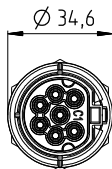
Color	Part No.
■ light gray	01.006.1553.0
■ black	01.006.1553.1

Device connector M25 straight, modular

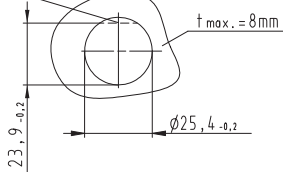
Female connector

Position fixing guaranteed by flattening the thread. Screwed from inside.
With or without contact seal.
Crimp contacts separate, Accessories.

For stripping lengths, refer to Technical Specifications.



wahlweise Verdrehsicherung
optional protection against twisting



With screw connection

Cables	mm ²
Rigid	
Fine stranded	0.2 - 2.5
Stranded	
Cables with 2.5 mm ² only without ferrules	

With crimp connection

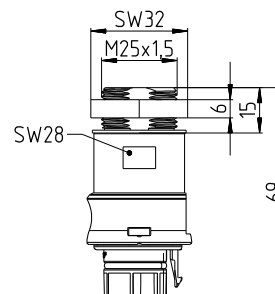
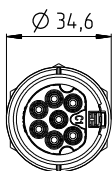
Cables	mm ²
Fine stranded	0.75-2.5

Application	Coding	Color	Part No.		Part No.	
			Without contact seal	With contact seal	Without contact seal	With contact seal
250/400V	1, 2, 3, 4/N, 5, 6, ⊕	light gray black	96.071.6253.0	9L.071.6253.0	96.171.2253.0	9L.171.2253.0
			96.071.6253.1	9L.071.6253.1	96.171.2253.1	9L.171.2253.1
	1, 2, 3, 4/N, 5, 6, 7	light blue	96.071.6253.9	9L.071.6253.9	96.171.2253.9	9L.171.2253.9
			96.071.6253.6	9L.071.6253.6	96.171.2253.6	9L.171.2253.6
	L, N, ⊕, 1, 2, 3, 4	turquoise				

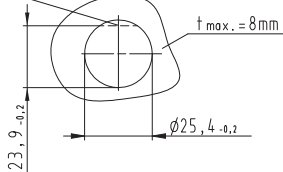
Male connector

Position fixing guaranteed by flattening the thread. Screwed from inside.
With or without contact seal.
Crimp contacts separate, Accessories.

For stripping lengths, refer to Technical Specifications.



wahlweise Verdrehsicherung
optional protection against twisting



With screw connection

Cables	mm ²
Rigid	
Fine stranded	0.2 - 2.5
Stranded	
Cables with 2.5 mm ² only without ferrules	

With crimp connection

Cables	mm ²
Fine stranded	0.75-2.5

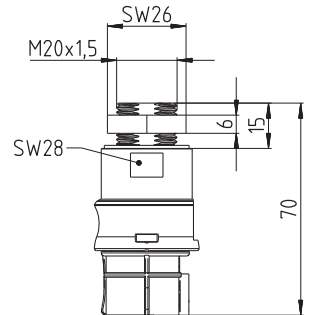
Application	Coding	Color	Part No.		Part No.	
			Without contact seal	With contact seal	Without contact seal	With contact seal
250/400V	1, 2, 3, 4/N, 5, 6, ⊕	light gray black	96.072.6253.0	9L.072.6253.0	96.172.2253.0	9L.172.2253.0
			96.072.6253.1	9L.072.6253.1	96.172.2253.1	9L.172.2253.1
	1, 2, 3, 4/N, 5, 6, 7	light blue	96.072.6253.9	9L.072.6253.9	96.172.2253.9	9L.172.2253.9
			96.072.6253.6	9L.072.6253.6	96.172.2253.6	9L.172.2253.6
	L, N, ⊕, 1, 2, 3, 4	turquoise				

Device connector M20 straight, modular

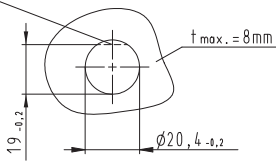
Female connector

Position fixing guaranteed by flattening the thread. Screwed from inside.
With or without contact seal.
Crimp contacts separate, Accessories.

For stripping lengths, refer to Technical Specifications.



wahlweise Verdrehsicherung
optional protection against twisting



With screw connection

Cables	mm ²
Rigid	
Fine stranded	0.2 - 2.5
Stranded	
Cables with 2.5 mm ² only without ferrules	

With crimp connection

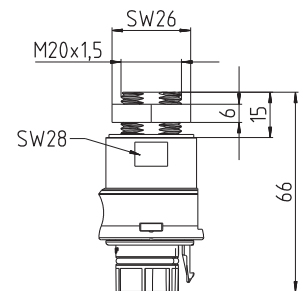
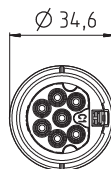
Cables	mm ²
Fine stranded	0.75-2.5

Application	Coding	Color	Part No.		Part No.	
			Without contact seal	With contact seal	Without contact seal	With contact seal
250/400V	1, 2, 3, 4/N, 5, 6, ⊕	light gray black	96.071.6053.0	9L.071.6053.0	96.171.2053.0	9L.171.2053.0
			96.071.6053.1	9L.071.6053.1	96.171.2053.1	9L.171.2053.1
	1, 2, 3, 4/N, 5, 6, 7	light blue	96.071.6053.9	9L.071.6053.9	96.171.2053.9	9L.171.2053.9
			96.071.6053.6	9L.071.6053.6	96.171.2053.6	9L.171.2053.6
	L, N, ⊕, 1, 2, 3, 4	turquoise				

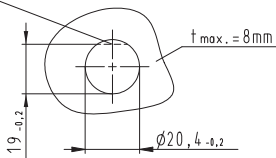
Male connector

Position fixing guaranteed by flattening the thread. Screwed from inside.
With or without contact seal.
Crimp contacts separate, Accessories.

For stripping lengths, refer to Technical Specifications.



wahlweise Verdrehsicherung
optional protection against twisting



With screw connection

Cables	mm ²
Rigid	
Fine stranded	0.2 - 2.5
Stranded	
Cables with 2.5 mm ² only without ferrules	

With crimp connection

Cables	mm ²
Fine stranded	0.75-2.5

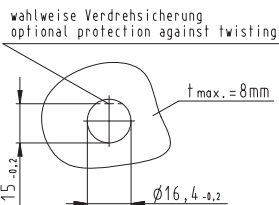
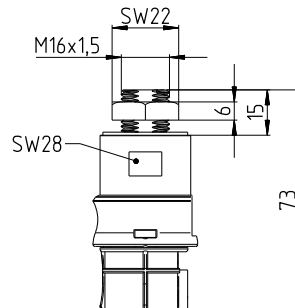
Application	Coding	Color	Part No.		Part No.	
			Without contact seal	With contact seal	Without contact seal	With contact seal
250/400V	1, 2, 3, 4/N, 5, 6, ⊕	light gray black	96.072.6053.0	9L.072.6053.0	96.172.2053.0	9L.172.2053.0
			96.072.6053.1	9L.072.6053.1	96.172.2053.1	9L.172.2053.1
	1, 2, 3, 4/N, 5, 6, 7	light blue	96.072.6053.9	9L.072.6053.9	96.172.2053.9	9L.172.2053.9
			96.072.6053.6	9L.072.6053.6	96.172.2053.6	9L.172.2053.6
	L, N, ⊕, 1, 2, 3, 4	turquoise				

Device connector M16 straight, modular

Female connector

Position fixing guaranteed by flattening the thread. Screwed from inside.
With or without contact seal.
Crimp contacts separate, Accessories.

For stripping lengths, refer to Technical Specifications.



With screw connection

Cables	mm ²
Rigid	
Fine stranded	0.2 - 2.5
Stranded	
Cables with 2.5 mm ² only without ferrules	

With crimp connection

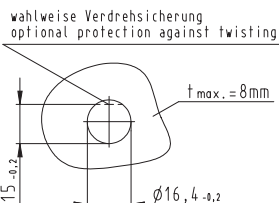
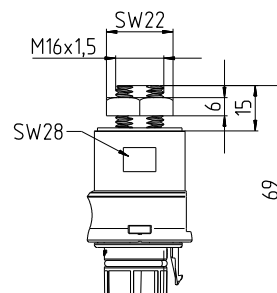
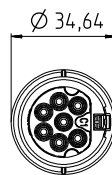
Cables	mm ²
Fine stranded	0.75-2.5

Application	Coding	Color	Part No.		Part No.	
			Without contact seal	With contact seal	Without contact seal	With contact seal
250/400V	1, 2, 3, 4/N, 5, 6, ⊕	light gray black	96.071.6153.0	9L.071.6153.0	96.171.2153.0	9L.171.2153.0
			96.071.6153.1	9L.071.6153.1	96.171.2153.1	9L.171.2153.1
	1, 2, 3, 4/N, 5, 6, 7	light blue	96.071.6153.9	9L.071.6153.9	96.171.2153.9	9L.171.2153.9
			96.071.6153.6	9L.071.6153.6	96.171.2153.6	9L.171.2153.6

Male connector

Position fixing guaranteed by flattening the thread. Screwed from inside.
With or without contact seal.
Crimp contacts separate, Accessories.

For stripping lengths, refer to Technical Specifications.



With screw connection

Cables	mm ²
Rigid	
Fine stranded	0.2 - 2.5
Stranded	
Cables with 2.5 mm ² only without ferrules	

With crimp connection

Cables	mm ²
Fine stranded	0.75-2.5

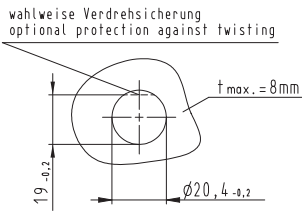
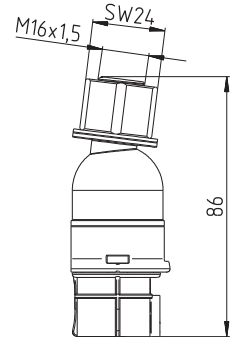
Application	Coding	Color	Part No.		Part No.	
			Without contact seal	With contact seal	Without contact seal	With contact seal
250/400V	1, 2, 3, 4/N, 5, 6, ⊕	light gray black	96.072.6153.0	9L.072.6153.0	96.172.2153.0	9L.172.2153.0
			96.072.6153.1	9L.072.6153.1	96.172.2153.1	9L.172.2153.1
	1, 2, 3, 4/N, 5, 6, 7	light blue	96.072.6153.9	9L.072.6153.9	96.172.2153.9	9L.172.2153.9
			96.072.6153.6	9L.072.6153.6	96.172.2153.6	9L.172.2153.6

Device connector M16 angled 7°, modular

Female connector

Position fixing guaranteed by flattening the thread. Screwed from inside.
With or without contact seal.
Crimp contacts separate, Accessories.

For stripping lengths, refer to Technical Specifications.



With screw connection

Cables	mm ²
Rigid	
Fine stranded	0.2 - 2.5
Stranded	
Cables with 2.5 mm ² only without ferrules	

With crimp connection

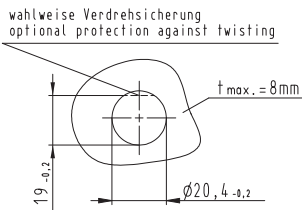
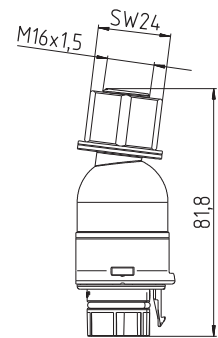
Cables	mm ²
Fine stranded	0.75-2.5

Application	Coding	Color	Part No.		Part No.	
			Without contact seal	With contact seal	Without contact seal	With contact seal
250/400V	1, 2, 3, 4/N, 5, 6, ⊕	light gray black	96.075.6153.0	on request	96.175.2153.0	on request
			96.075.6153.1	on request	96.175.2153.1	on request
	1, 2, 3, 4/N, 5, 6, 7	light blue	96.075.6153.9	on request	96.175.2153.9	on request
	L, N, ⊕, 1, 2, 3, 4	turquoise	96.075.6153.6	on request	96.175.2153.6	on request

Male connector

Position fixing guaranteed by flattening the thread. Screwed from inside.
With or without contact seal.
Crimp contacts separate, Accessories.

For stripping lengths, refer to Technical Specifications.



With screw connection

Cables	mm ²
Rigid	
Fine stranded	0.2 - 2.5
Stranded	
Cables with 2.5 mm ² only without ferrules	

With crimp connection

Cables	mm ²
Fine stranded	0.75-2.5

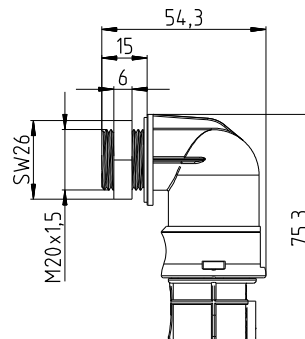
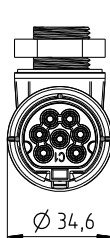
Application	Coding	Color	Part No.		Part No.	
			Without contact seal	With contact seal	Without contact seal	With contact seal
250/400V	1, 2, 3, 4/N, 5, 6, ⊕	light gray black	96.076.6153.0	on request	96.176.2153.0	on request
			96.076.6153.1	on request	96.176.2153.1	on request
	1, 2, 3, 4/N, 5, 6, 7	light blue	96.076.6153.9	on request	96.176.2153.9	on request
	L, N, ⊕, 1, 2, 3, 4	turquoise	96.076.6153.6	on request	96.176.2153.6	on request

Device connector M20 angled 90°, modular

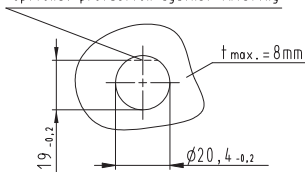
Female connector

Position fixing guaranteed by flattening the thread. Screwed from inside.
With or without contact seal.
Crimp contacts separate, Accessories.

For stripping lengths, refer to Technical Specifications.



wahlweise Verdrehsicherung
optional protection against twisting



With screw connection

Cables	mm ²
Rigid	
Fine stranded	0.2 - 2.5
Stranded	
Cables with 2.5 mm ² only without ferrules	

With crimp connection

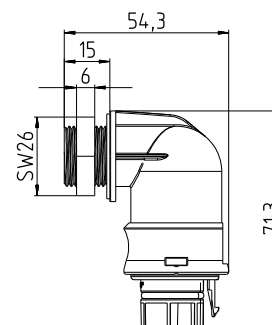
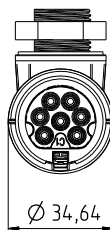
Cables	mm ²
Fine stranded	0.75-2.5

Application	Coding	Color	Part No.		Part No.	
			Without contact seal	With contact seal	Without contact seal	With contact seal
250/400V	1, 2, 3, 4/N, 5, 6, ⊕	light gray black	96.073.6053.0	on request	96.173.2053.0	on request
			96.073.6053.1	on request	96.173.2053.1	on request
	1, 2, 3, 4/N, 5, 6, 7	light blue	96.073.6053.9	on request	96.173.2053.9	on request
	L, N, ⊕, 1, 2, 3, 4	turquoise	96.073.6053.6	on request	96.173.2053.6	on request

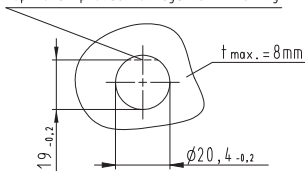
Male connector

Position fixing guaranteed by flattening the thread. Screwed from inside.
With or without contact seal.
Crimp contacts separate, Accessories.

For stripping lengths, refer to Technical Specifications.



wahlweise Verdrehsicherung
optional protection against twisting



With screw connection

Cables	mm ²
Rigid	
Fine stranded	0.2 - 2.5
Stranded	
Cables with 2.5 mm ² only without ferrules	

With crimp connection

Cables	mm ²
Fine stranded	0.75-2.5

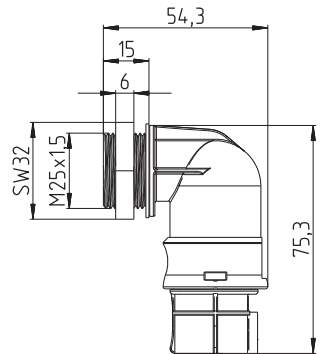
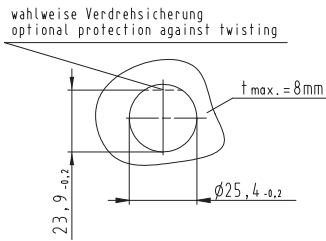
Application	Coding	Color	Part No.		Part No.	
			Without contact seal	With contact seal	Without contact seal	With contact seal
250/400V	1, 2, 3, 4/N, 5, 6, ⊕	light gray black	96.074.6053.0	on request	96.174.2053.0	on request
			96.074.6053.1	on request	96.174.2053.1	on request
	1, 2, 3, 4/N, 5, 6, 7	light blue	96.074.6053.9	on request	96.174.2053.9	on request
	L, N, ⊕, 1, 2, 3, 4	turquoise	96.074.6053.6	on request	96.174.2053.6	on request

Device connector M25 angled 90°, modular

Female connector

Position fixing guaranteed by flattening the thread. Screwed from inside.
With or without contact seal.
Crimp contacts separate, Accessories.

For stripping lengths, refer to Technical Specifications.



With screw connection

Cables	mm ²
Rigid	
Fine stranded	0.2 - 2.5
Stranded	
Cables with 2.5 mm ² only without ferrules	

With crimp connection

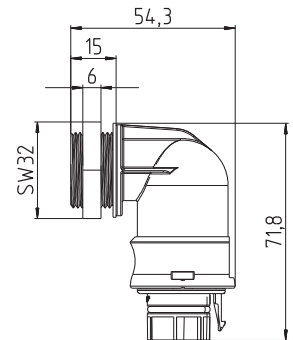
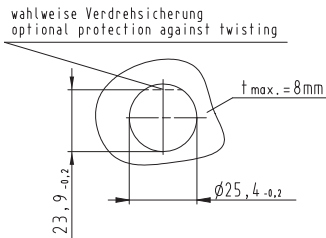
Cables	mm ²
Fine stranded	0.75-2.5

Application	Coding	Color	Part No.		Part No.	
			Without contact seal	With contact seal	Without contact seal	With contact seal
250/400V	1, 2, 3, 4/N, 5, 6, ⊕	light gray black	96.073.6253.0	on request	96.173.2253.0	on request
	1, 2, 3, 4/N, 5, 6, 7	light blue	96.073.6253.1	on request	96.173.2253.1	on request
	L, N, ⊕, 1, 2, 3, 4	turquoise	96.073.6253.9	on request	96.173.2253.9	on request
			96.073.6253.6	on request	96.173.2253.6	on request

Male connector

Position fixing guaranteed by flattening the thread. Screwed from inside.
With or without contact seal.
Crimp contacts separate, Accessories.

For stripping lengths, refer to Technical Specifications.



With screw connection

Cables	mm ²
Rigid	
Fine stranded	0.2 - 2.5
Stranded	
Cables with 2.5 mm ² only without ferrules	

With crimp connection

Cables	mm ²
Fine stranded	0.75-2.5

Application	Coding	Color	Part No.		Part No.	
			Without contact seal	With contact seal	Without contact seal	With contact seal
250/400V	1, 2, 3, 4/N, 5, 6, ⊕	light gray black	96.074.6253.0	on request	96.174.2253.0	on request
	1, 2, 3, 4/N, 5, 6, 7	light blue	96.074.6253.1	on request	96.174.2253.1	on request
	L, N, ⊕, 1, 2, 3, 4	turquoise	96.074.6253.9	on request	96.174.2253.9	on request
			96.074.6253.6	on request	96.174.2253.6	on request

Cover pieces

Cover pieces

For the safe closure of female and male connectors.

With mounting strap for snapping onto plug connectors and device connectors

for female



not captive against loss

Color

■ black

for female

Part No.

Z5.569.5253.1

for male

Part No.

Z5.569.5353.1

for male



for female



captive against loss

Color

■ black

for female

Part No.

99.589.0000.7

for male

Part No.

99.591.0000.7

for male



Crimp contacts

Female contact



Name	Marking	(groove) mm ²	Part No.
Female contact	None	0.75 – 1.0	02.127.1121.8
Female contact	1	1.5	02.127.1221.8
Female contact	2	2.5	02.127.1321.8

Male contact



Male contact	None	0.75 – 1.0	05.546.3921.8
Male contact	1	1.5	05.546.4021.8
Male contact	2	2.5	05.546.4121.8

Accessories

Extraction tool for crimp contacts



Name	Part No.
Extraction tool	05.502.3500.0

Crimping tool



Name	Part No.
Crimping tool incl. system kit	95.101.0800.0
Crimping die B	0.75 – 4.0 mm ² 05.502.2100.0
Contact positioner	05.502.3600.0

Manual disconnect tool



Name	Part No.
Manual disconnect tool	06.562.8753.0

Technical data

	RST 20i6/i7
Rated voltage	250/400V
Rated current	20 A (3x20A; 4x5A)
Number of poles	6- or 7-pole

Temperature range:	-40° C to +100° C
Material:	Contact parts: Brass, surface-treated housing parts: Polyamide, halogen-free, V2, f1 seal material: NBR
Regulations:	IEC 61535; UL2238; CSA: C22.2 No.182.2-M1987
Pollution degree:	3 (when connected)
Plugging cycles:	100 x without load and 50 x under nominal load ($\cos \varphi = 0.6$) to IEC 61535
Approvals:	VDE; Pending: cULus; LR; GL/DNV; RINA; BV Direct assignment between approval and item number can be found on the Internet in the eShop at http://eshop.wieland-electric.com or speak to us.
Protection rating:	IP66/68 (3m; 2h)/69, barrier seal optional
IK code:	IK 07 (2 Joule)
Glowing wire test 960° C, 30 s:	For connectors, splitters, pre-assembled cables and device connectors
Coding:	Mechanical coding symbolized through color code. ray and black with the same mechanical coding. Other codings optional.

Note: Protection against shock generally guaranteed even when disconnected. Ground conductor leading. Connection to the live cable must be with a female connector according to the regulations. It is therefore not possible to have a ring circuit arrangement. Only pluggable in the correct pole configuration; 1 pole cannot be connected. Contacts protected against strain on the cable. All components can be interlocked.

A locking device is required for IEC 6153 approval.
DIN VDE 0606 T200 conformity does not automatically exclude the danger of confusion with third-party installation plug connector systems! Installation plug connector systems are no substitute for national plug/outlet systems for domestic use. IEC 60364-5-52 must be observed – see note under “Electrical installations with increased degree of protection”.

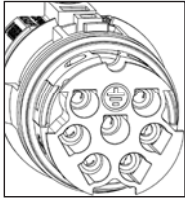
Wire preparation

Insulation strip lengths and ferrules

RST 4 /5-pole

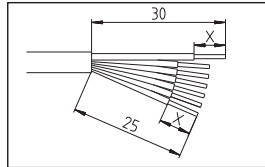
all lengths indicated in mm

Screw connection:

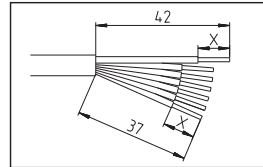


Screwdriver
PZ1
Rated torque:
0.5 – 0.7 Nm

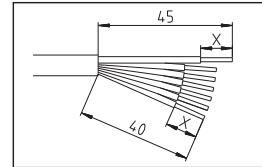
Connector
6 – 10 mm
10 – 14 mm



Connector
13 – 18 mm



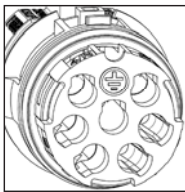
Splitter connector
max. 2 x 1.5 mm²!



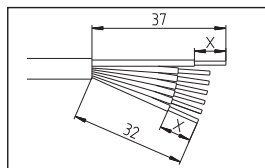
Insulation strip length X =

Conductor cross-section	0.2 mm ²	0.5 mm ²	0.75 mm ²	1.0 mm ²	1.5 mm ²	2.5 mm ²	AWG 14–20
solid	8 *	8 *	8 *	8 *	8 *	8 **	8 *
fine-stranded	8 *	8 *	8 *	8 *	8 *	8 **	8 **

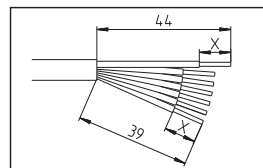
Crimp connection:



Connector
6 – 10 mm
10 – 14 mm



Connector
13 – 18 mm



Insulation strip length X =

Conductor cross-section	0,75 mm ²	1,0 mm ²	1,5 mm ²	2,5 mm ²	4,0 mm ²	AWG 14-20
fine-stranded	7.0 + 1	7.0 + 1	7.0 + 1	7.0 + 1	7.0 + 1	



Wieland at a glance

Our range of products and services for your industry



Product portfolio

- Electronic and electrical engineering for the control cabinet
- Safety technology
- Network and fieldbus systems
- Energy bus systems for industry and buildings
- Connectors up to protection rating IP6X
- Building automation
- PCB terminals and plug connectors
- Sensor/actuator cabling



Industries

- Machine building
- Construction machines & cranes
- Buildings and lighting
- Logistics
- Power engineering
- Renewable energy sources
- Heating and air conditioning systems



Business services

- Pre-assembly and wiring
- Product labeling service
- Integrated solutions in distributors
- Customized solutions
- On-site project support
- Optimization of decentralized, pluggable installation solutions
- Certified machine safety tests



Safety training

- Software validation
- CSE Certified Safety Engineer
- Basic principles and standards of functional safety
- Modification of old machinery and major changes
- Design of safety functions and calculation with Sistema
- Machinery Directive, liability issues, and CE Declarations of Conformity



Software/configuration tools

- **wieplan** CLICK2BUY, configuration of terminal strips with online ordering function
- **wieprint**, marking system for DIN rail terminal blocks
- **revos** configurator for connectors
- **gesis**® PLAN for building installation
- **podis**® PLAN for configuring the **podis**® energy bus system
- **samos**® PLAN 6, programming tool for **samos**® PRO COMPACT
- **hmi** PLAN, visualization software for HMI touch panels



Why Wieland?

- Standardized industrial solutions
- Customized solutions
- Support for your project
- Broad product portfolio
- Products usable worldwide due to international licenses
- Group-wide observance of human rights, including at suppliers
- Eco-friendly production



Technical consultation

and general information

Use the Wieland hotline – a phone call is all it takes

Industrial automation, electromechanical

Hotline **+49 951 9324-991**
E-mail **AT.TS@wieland-electric.com**

Building and installation technology

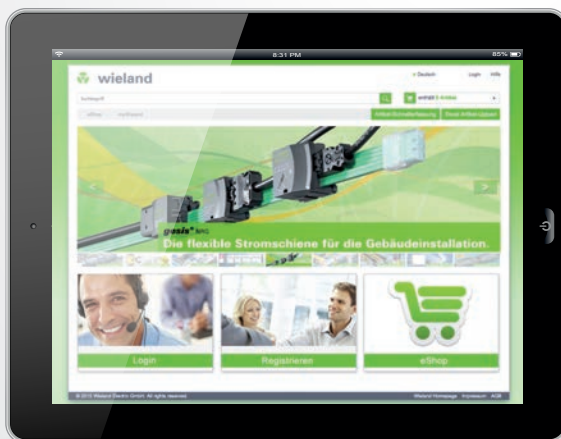
Hotline **+49 951 9324-996**
E-mail **BIT.TS@wieland-electric.com**

Industrial automation, electronics

Hotline **+49 951 9324-995**
E-mail **AT.TS@wieland-electric.com**

Safety technology

Hotline **+49 951 9324-999**
E-mail **safety@wieland-electric.com**



eShop

Our products can also be found in our online shop at:

eshop.wieland-electric.com



Info & News

Contact your local partner in over 70 countries:

www.wieland-electric.com



USA & CANADA
Wieland Electric Inc.
North American Headquarters
2889 Brighton Road
Oakville, Ontario L6H 6C9
Phone +1 905 829-8414
Fax +1 905 829-8413
sales@wielandinc.com
www.wielandinc.com
www.wieland-electric.ca



GREAT BRITAIN
Wieland Electric Ltd.
Riverside Business Centre,
Walnut Tree Close
GB Guildford/Surrey GU1 4UG
Phone +44 1483 531213
Fax +44 1483 505029
sales.uk@wieland-electric.com
www.wieland.co.uk



ITALY
Wieland Electric S.r.l.
Via Edison, 209
I-20019 Settimo Milanese
Phone +39 02 48 916357
Fax +39 02 48 920685
info.italy@wieland-electric.com
www.wieland-electric.it



FRANCE
Wieland Electric SARL.
Le Cérame, Hall 6
47, avenue des Genottes
CS 48313,
95803 Cergy-Pontoise Cedex
Phone +33 1 30320707
Fax +33 1 30320717
info.france@wieland-electric.com
www.wieland-electric.fr



SPAIN
Wieland Electric S.L.
C/ Maria Auxiliadora 2, bajos
E-08017 Barcelona
Phone +34 93 2523820
Fax +34 93 2523825
ventas@wieland-electric.com
www.wieland-electric.es



SWITZERLAND
Wieland Electric AG
Harzachstrasse 2b
CH-8404 Winterthur
Phone +41 52 2352100
Fax +41 52 2352119
info.swiss@wieland-electric.com
www.wieland-electric.ch



BELGIUM & GD LUXEMBOURG
ATEM-Wieland Electric NV
Bedrijvenpark De Veert 4
B-2830 Willebroek
Phone +32 3 8661800
Fax +32 3 8661828
info.belgium@wieland-electric.com
www.wieland-electric.be



DENMARK
Wieland Electric A/S
Vallørækken 26
DK-4600 Køge
Phone +45 70 266635
Fax +45 70 266637
sales.denmark@wieland-electric.com
www.wieland-electric.dk



SWEDEN
Wieland Electric AB
Krossverksgatan 9B
216 16 Limhamn
Phone +46 40 652 90 00
sales.sweden@wieland-electric.com
www.wieland-electric.se



POLAND
Wieland Electric Sp. z o.o.
Św. Antoniego 8
62-080 Swadzim
Phone +48 61 2225400
office@wieland-electric.pl
www.wieland-electric.pl



CHINA
Wieland Electric Trading
Unit 2703 International Soho City
885 Renmin Road,
Huangpu District
PRC- Shanghai 200010
Phone +86 21 63555772
Fax +86 21 63550090
info-shanghai@wieland-electric.com
www.wieland-electric.cn



JAPAN
Wieland Electric Co, Ltd.
Nisso No. 16 Bldg. 7F
3-8-8 Shin-Yokohama,
Kohoku-ku
Yokohama 222-0033
Phone +81 45 473 5085
Fax +81 45 470 5408
info-japan@wieland-electric.com



GERMANY
Headquarters
Wieland Electric GmbH
Brennerstraße 10 – 14
96052 Bamberg, Germany
Phone +49 951 9324-0
Fax +49 951 9324-198
info@wieland-electric.com
www.wieland-electric.de

Sales Partner:
You can reach us worldwide in more than 70 countries.
Find the contact adress at: www.wieland-electric.com

Subject to technical modifications!
gesis®, RST®, GST®, GST18®, podis®, samos®, saris® and wiecon® are registered trademarks of Wieland Electric GmbH

**contacts
are
green.**